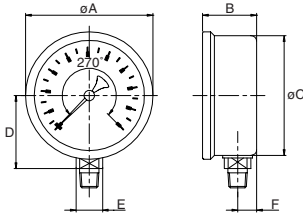


Sizes and weights series 6220

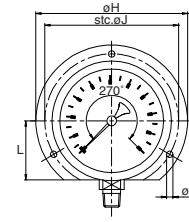


6221 bottom



	Size	A	B	C	D	E	F	Wght.
inch	4	4.09	1.16	3.90	2.44	0.55	0.39	1.015
mm	100	104	29.5	99	57	14	10.0	0.460

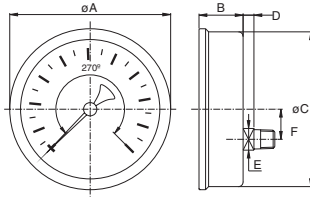
6222 backflange st. steel



for other measurements see 6221

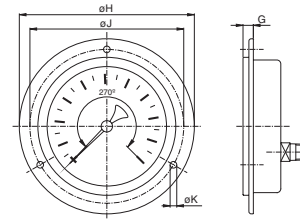
	Size	B	F	G	H	J	K	L	Wght.
inch	4	1.26	0.49	0.16	5.20	4.57	0.20	2.05	1.205
mm	100	32.0	12.5	4	132	116	5.0	52	0.545

6225 lowerback



	Size	A	B	C	D	E	F	Wght.
inch	4	4.09	1.22	3.90	0.28	0.55	0.77	1.015
mm	100	104	31	99	7	14	19.5	0.460

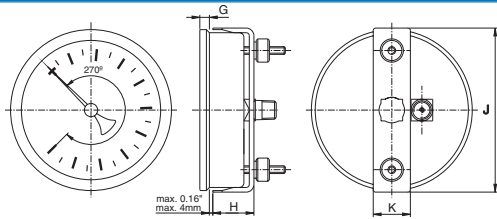
6228 frontflange



for other measurements see 6225

	Size	G	H	J	K	Wght.
inch	4	0.35	5.20	4.57	0.20	1.215
mm	100	9	132	116	5	0.550

6229 U-clamp steel, zinc plated



for other measurements see 6225

	Size	G	H	J	K	Wght.
inch	4	0.24	1.12	4.17	0.94	1.170
mm	100	6	28.5	106	24	0.530