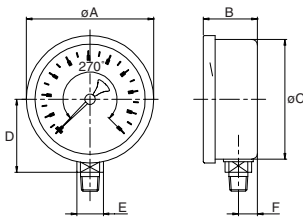


Sizes and weights series 7620

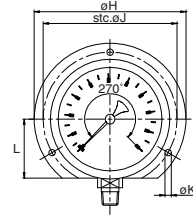


7621 bottom



Size	A	B	C	D	E	F	Wght.
2 1/2	2.68	1.17	2.48	1.52	0.55	0.39	0.345
4	4.13	1.83	3.90	2.48	0.87	0.67	1.190
6	6.22	2.17	5.85	3.62	0.87	0.77	2.425
63	68	29.7	63.0	38.5	14	10.0	0.155
100	105	46.5	99.0	63.0	22	17.0	0.540
150	158	55.0	148.5	92.0	22	19.5	1.100

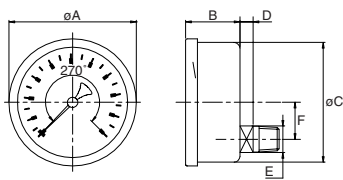
7622 backflange st. steel



for other measurements see 7621

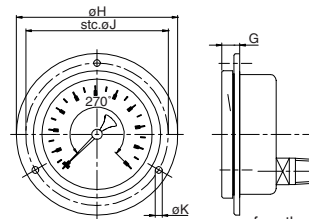
Size	B	F	G	H	J	K	L	Wght.
2 1/2	1.23	0.45	0.12	3.35	2.95	0.14	1.30	0.390
4	1.93	0.77	0.16	5.20	4.57	0.20	2.05	1.345
6	2.34	0.94	0.24	7.32	6.61	0.24	3.07	2.935
63	31.2	11.5	3	85	75	3.6	33	0.175
100	49.0	19.5	4	132	116	5.0	52	0.610
150	59.5	24.0	6	186	168	6.0	78	1.330

7625 lowerback



Size	A	B	C	D	E	F	Wght.
2 1/2	2.67	1.15	2.48	0.28	0.55	0.77	0.345
4	4.13	1.89	3.90	0.43	0.87	1.31	1.280
6	6.22	2.17	5.85	0.67	0.87	2.07	2.890
63	68	29.2	63.0	7	14	19.5	0.155
100	105	48.0	99.0	11	22	33.4	0.580
150	158	55.0	148.5	17	22	52.5	1.310

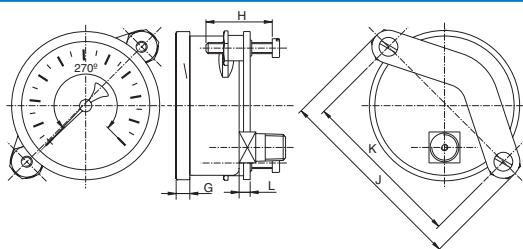
7628 frontflange



for other measurements see 7625

Size	G	H	J	K	Wght.
2 1/2	0.43	3.35	2.95	0.14	0.400
4	0.53	5.20	4.57	0.19	1.425
6	0.83	7.32	6.61	0.24	3.350
63	11.0	85	75	3.6	0.180
100	13.5	132	116	4.8	0.645
150	21.0	186	168	6.0	1.520

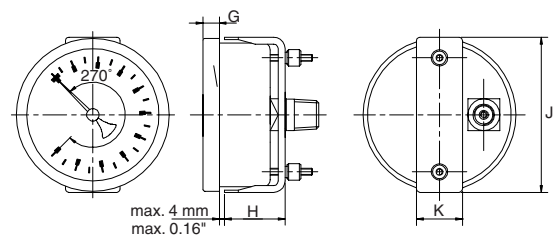
7629 U-clamp steel, zinc plated



for other measurements see 7625

Size	G	H	J	K	L	Wght.
2 1/2	0.24	1.18	3.48	2.89	0.20	0.465
63	6	30	88.5	73.5	5	0.210

7629 U-clamp steel, zinc plated



for other measurements see 7625

Size	G	H	J	K	Wght.
4	0.39	1.73	4.17	0.98	1.430
6	0.51	1.99	6.61	0.98	3.230
100	10	44	106	25	0.650
150	13	49	168	25	1.890