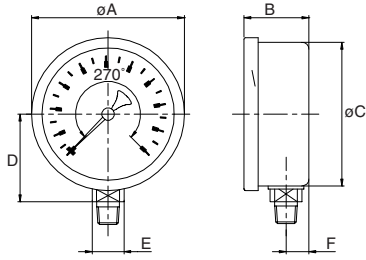


# Sizes and weights series 7610

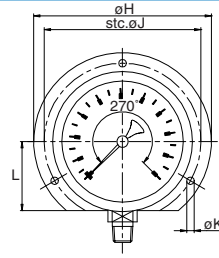


### 7611 bottom



Size	A	B	C	D	E	F	Wght.
4	4.13	1.83	3.90	2.48	0.87	0.67	1.190
6	6.22	2.17	5.85	3.62	0.87	0.77	2.260
100	105	46.5	99.0	63	22	17.0	0.540
150	158	55.0	148.5	92	22	19.5	1.025

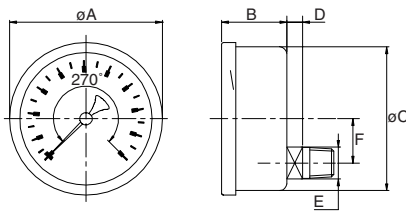
### 7612 backflange st. steel



for other measurements see 7611

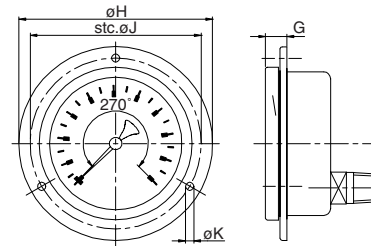
Size	B	F	G	H	J	K	L	Wght.
4	1.93	0.77	0.16	5.20	4.57	0.20	2.05	1.345
6	2.34	0.94	0.24	7.32	6.61	0.24	3.07	2.680
100	49.0	19.5	4	132	116	5.0	52	0.610
150	59.5	24.0	6	186	168	6.0	78	1.215

### 7615 lowerback



Size	A	B	C	D	E	F	Wght.
4	4.13	1.89	3.90	0.43	0.87	1.31	1.280
6	6.22	2.17	5.85	0.67	0.87	2.07	2.495
100	105	48	99.0	11	22	33.4	0.580
150	158	55	148.5	17	22	52.5	1.130

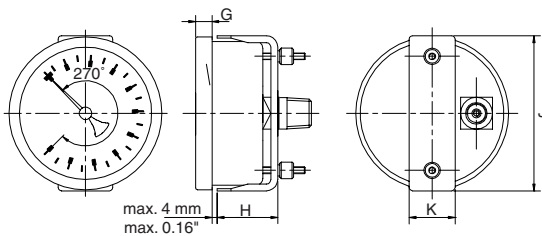
### 7618 frontflange



for other measurements see 7615

Size	G	H	J	K	Wght.
4	0.53	5.20	4.57	0.19	1.425
6	0.83	7.32	6.61	0.24	2.910
100	13.5	132	116	4.8	0.645
150	21.0	186	168	6.0	1.320

### 7619 U-clamp steel, zinc plated



for other measurements see 7615

Size	G	H	J	K	Wght.
4	0.39	1.73	4.17	0.98	1.445
6	0.51	1.93	6.61	0.98	3.275
100	10	44	106	25	0.655
150	13	49	168	25	1.485